



planet positive power

# EMPOWERING COMMUNITIES, INSPIRING CHANGE.

01

Message from  
the Global CEO

02

Foreword

03

CSR Vision

04

CSR Mission

05

People Positive

07

Water Positive

08

Planet Positive

09

Employee Testimonials

11

Success Stories





# MESSAGE FROM THE GLOBAL CEO



In a world where the challenges of social justice and environmental sustainability increasingly intersect with business, the importance of Corporate Social Responsibility (CSR) has never been greater. This bulletin highlights the multi-faceted approach HFE has taken to bring about meaningful change in the lives of people in the communities where we operate – this is based on our belief and commitment that the impact we bring must go beyond clean energy generation, to truly enrich communities.

From our Asha Education Centres that enable after-school educational coaching, to vocational training programmes aimed at empowering the under privileged, we're investing in human capital. Our Water ATM and Check Dam projects address the critical issue of water scarcity, benefitting thousands of farmers and families. Further, our environmental initiatives, including tree plantation efforts and solarising educational institutions, reflect our relentless commitment to combat climate change.

We've set ambitious CSR goals for 2030, and every one of you plays a pivotal role in achieving these. Together, we are not merely conducting business, but generating 'Planet Positive Power' that brings about social good. I'm proud of what we have achieved so far and incredibly excited for what's about to come.

**Srivatsan Iyer**

*Global CEO, Hero Future Energies*

# FOREWORD



Hope this CSR bulletin finds our stakeholders in good health and high spirits.

The objective of releasing a bi-annual CSR bulletin is to apprise all stakeholders about the work undertaken for community development through CSR initiatives in the last 6 months. We are committed to economic, social and environmental capital for enhancing societal sustainability. Our approach is inclusive growth near our project locations aligned with the United Nation's Sustainable Development Goals — 4, 5 and 6. All these result in creating people positive, climate positive and water positive impacts. HFE believes in empowering younger generations even in the remotest corners of the country. To accomplish this goal, digital education, skilling centres, remedial classes programme and Asha Education centres are the core. These programmes ensure that learning inculcates the right values and ethos.

We have taken up the initiative of 'Digital Way' by supporting digitisation in government schools in a phased manner. These small steps will bring a constant ripple of change.

Our effort to become water-positive has been well received by the community around our project sites. Not only water ATMs but also our water checkdams are becoming a source of happiness and prosperity for the community.

We have taken initiatives towards the solarisation of schools in the remote areas of Ladakh. Plantation drives reflect our commitment to become climate positive.

We will continue to focus on the chosen thematic areas for social development and keep on delivering the best as we target our ambitious goals for 2030.

At HFE, devotion and dedication meet commitment. Let's build a better world together by supporting communities.

**Bhawna Kirpal Mital**

*CHRO & Lead – IT, ADMIN & CSR*

# CSR VISION

Lead India's development with clean, cost-effective power from wind and solar, reducing carbon emissions for a greener future.

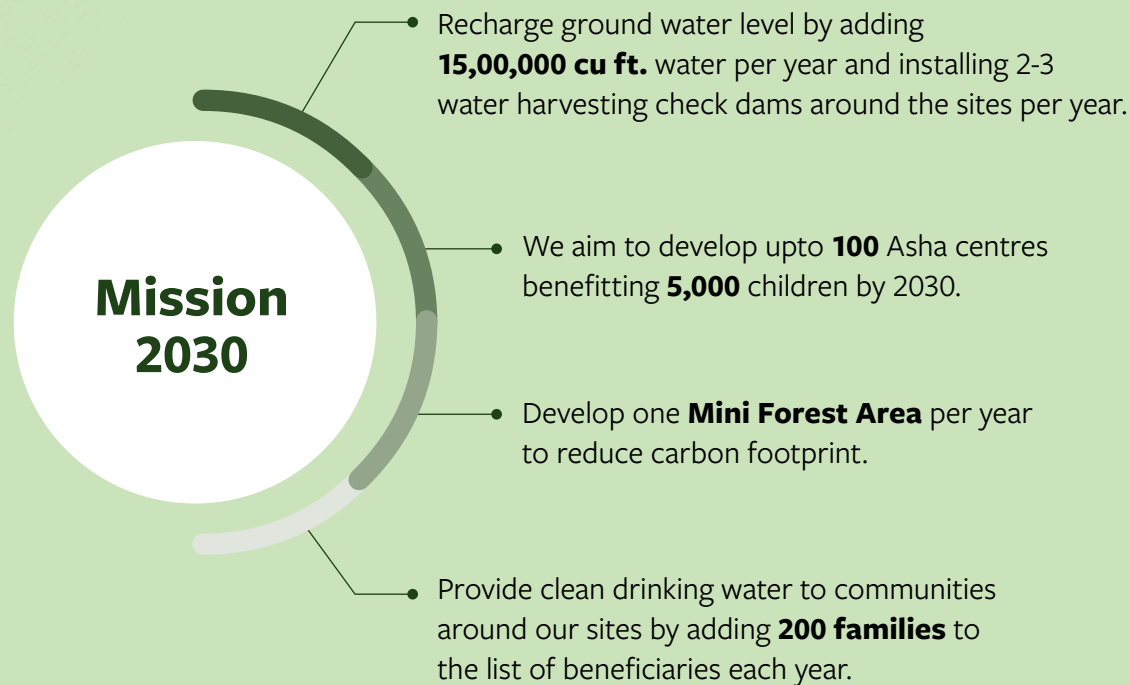
We call this  
“planet positive power”



# CSR MISSION

Directly or indirectly take up CSR programmes that benefit the communities in and around our project sites, with an objective to promote inclusive growth and address the basic needs of the deprived, underprivileged, neglected and weaker sections of the society.

To generate through CSR initiatives, goodwill and pride for HFE among stakeholders and help reinforce a positive and socially responsible image of HFE as a corporate entity.



# PEOPLE POSITIVE

## Asha Education Centres (Remedial Classes)

Our Asha Education Centres are run in collaboration with Raman Kant Munjal Foundation Trust. These centres offer remedial classes for the students who go to nearby govt schools in the villages around our project sites at Dhar in Madhya Pradesh, Pratapgarh in Rajasthan and Sheo in Barmer, Rajasthan. The Asha Education centres have contributed to a sharp reduction in the dropout rate from schools.

In addition to education, these centres also encourage students to pursue various extra-curricular activities like sports, music, and art besides inculcating good health and hygiene habits. The focus is on developing the overall personality of the students. Our network of 45 Asha Centres support more than 1,100 students currently.

The teachers at these centres are appointed from within the village after a recruitment process that involves knowledge and teaching skill set assessment and includes one-week teaching skill facilitation by a competent foundation volunteer.

### Dhar, Madhya Pradesh

A total of fifteen Asha Education Centres cater to the educational needs of students, with ten centres dedicated to classes 1<sup>st</sup> to 5<sup>th</sup> and five centres tailored for classes 6<sup>th</sup> to 8<sup>th</sup>, collectively enrolling a total of 300 students. Each centre maintains an optimal student-teacher ratio, ensuring no more than 25 students per class.

### Pratapgarh, Rajasthan

Fifteen Asha Education Centres are being run, enrolling 252 children.

### Sheo, Barmer, Rajasthan

Fifteen Asha Education centres are being run, enrolling 250+ children.

The focus extends beyond the conventional curriculum and lays equal stress on extra-curricular activities. Emphasis is placed on providing a holistic education experience that goes beyond textbooks. To further support academic progress, remedial classes are conducted in the evening, from 4:00 p.m. to 6:00 p.m., six days a week. To facilitate effective teaching and learning, each Asha Education Centre is equipped with an audio system, enhancing the learning experience for the students.

**~1,100 students**  
Supported by Asha Centres





# PEOPLE POSITIVE



## Vocational Trainings

HFE empowers the less privileged in our society through vocational training by conducting employability-focused programmes like sewing, stitching, and computer courses. Our certified programmes have transformed lives, enabling trainees to either establish their small businesses or contribute to other enterprises.

Through these programmes, we have successfully reached out to 300+ youth at Dhar in Madhya Pradesh and Devgarh, Pratapgarh and Barmer districts in Rajasthan.

## Skill Centre for Tailoring Course

HFE along with RKMF successfully launched a skill centre for tailoring and stitching in March 2021, providing valuable training opportunities for women and girls at Bidwal, in Dhar district of Madhya Pradesh. The same was replicated at Devgarh and Barmer in Rajasthan in 2022. More than 200 individuals have enrolled in the programme, undergoing comprehensive training in various aspects of tailoring. The training helps them to acquire diverse skill sets and empowers the trainees to either establish their own boutique or engage in stitching work, working from home. This initiative aims to promote economic independence and empowerment among women and girls in the community.

## Basic Certificate in Computer Course

In September 2021, HFE in association with RKMF, started a Computer Training Centre in Bidwal village, Dhar, Madhya Pradesh. In 2022, two new centres were started at Devgarh and Sheo in Barmer, Rajasthan. Throughout FY 2022-23, RKMF successfully trained more than 150 youth in the surrounding areas of Dhar and Barmer. The students completed a comprehensive six-month Basic Computer course, which included modules on typing skills, MS Office and fundamentals of computer usage. The primary objective of this training programme is to equip the local youth with essential computer knowledge, making them job-ready and enhancing their employability.

# 150+

Trained youth in Dhar and Barmer

# WATER POSITIVE

## Water ATMs

The underground water in Dhar and Alote in Madhya Pradesh, Pratapgarh, Deogarh and Barmer in Rajasthan and Anantapur in Andhra Pradesh is contaminated with fluoride and unfit for drinking. To mitigate this problem, we installed water ATMs to provide clean and safe drinking water to the affected communities. This initiative has been instrumental in benefitting more than a thousand families so far.

HFE has installed 10 water ATMs as of FY 2022-23. This has significantly improved the lives of women in these areas as earlier they were compelled to walk long distances to fetch water. They can now utilise the same time for more productive work.

HFE ensures regular maintenance and upkeep of these water ATMs.

## Water Check Dams

Check dams ensure a regular water supply for sustainable irrigation throughout the year besides recharging the groundwater for better use. HFE, in partnership with PHFRDF & RKMF, has constructed six water check dams so far. These check dams have benefitted more than 500 farmers by reviving one million cu. ft. of storing capacity besides helping to restore the balance of the surrounding flora and fauna. It has also provided employment opportunities to villagers.

# 6

**Water Check Dams constructed till 2022**





# PLANET POSITIVE



## Environment

HFE aims to become climate-positive by 2030, by reducing more greenhouse gas emissions in absolute terms than our project lifecycle emits, while growing our business. Aligned to this goal, the CSR team has initiated Tree Plantation drives around all our project sites, focusing on the quality of trees that we are going to plant along with regular care of the same. We aim to plant 10,000 trees every year. In FY 2022-23, we planted 5,000 trees across all locations, along with drip irrigation facility wherever possible.

# 5,000

Trees planted across all locations

## Solarising NGOs and Schools

In FY 2022-23, HFE along with RKMf solarised the hostel building of Wanla School in Ladakh. Here, students face a big challenge in traveling to school due to the weather and challenging terrain. The hostel facility at Wanla school helps children from nearby villages to receive quality education by providing them with residential facilities. HFE's initiative will provide uninterrupted power supply to hostels, which will help students focus on their education throughout the year.

In FY 2022-23, HFE also refurbished the solar plant of Vatsalyam Gurukul at Hazipur, Noida. Vatsalyam Gurukul supports the education of more than 250 students from nearby slums and villages of Noida and also provides shelter to homeless destitute girls. Currently, Vatsalyam Gurukul is home to 45 girls, where they are provided free education.

# EMPLOYEE TESTIMONIALS



**Archna Koul Sumbly**

*AGM — CSR*

“HFE’s project sites are in the remotest corners of the country which lack basic infrastructure, schools, medical centres and skill enhancement opportunities. We have adopted the approach of inclusive growth of communities near our project locations and our CSR programmes are designed accordingly. Our various initiatives have been appreciated by communities and visibly transformed lives which encourages us to replicate the same across different locations.

Corporate Social Responsibility is a journey at HFE, and with continuous focus, we can make a strong impact at the grassroots level. Personally, being part of this initiative makes me proud and fulfilled.”



**Nikita Singh**

*Manager — Health Safety & Environment HSE*

“Our CSR team is doing an impeccable job in providing skill development facilities, child education and welfare, sustainable water solutions for rural communities. It is evident that all initiatives are very well planned and specifically curated for the people who need it most. It is heartening to see that the CSR team is working beyond resource allocation, at a deeper level to eradicate the skill gap and lack of access to quality education in underprivileged communities, especially among young girls and women. It fills me with pride and satisfaction to see our CSR team continuously working towards a brighter tomorrow for marginalised communities.”



**Arunesh Kumar**

*Manager — O&M*

“Since FY 2022-23, we at HFE have focused on community development. Under this, we have opened a computer centre and skill centre in one of the villages adjacent to our project site in Deogarh. This helps in polishing the skills of rural youth and creating better career opportunities for them. I have been an active member of the team that has conducted various activities like plantation drives, setting up check dams, installing water ATMs to provide clean drinking water, etc. For the past few years, we have been running Asha Centres in local villages which helps students enhance their knowledge. Being a part of HFE, I am thankful to HFE CSR team for involving us in these CSR activities that enable us to help in community development with the help of RKMF.”



# EMPLOYEE TESTIMONIALS



**Naresh Kumawat**

*Sr. Manager — O&M Wind*

“HFE is dedicated to holistic development within the existing ecosystem. In collaboration with the RKMF foundation, HFE is extending CSR initiatives nationwide like Asha Education Centres, Skill Centre featuring Computer and Silai Kadhai Kendra to enhance the skills of underprivileged individuals. Initiatives such as the development of check dams for water storage and recharging systems, along with the installation of water ATM units aim to provide purified water to local communities, thereby improving their overall health. The positive response and support received from both the local community and our team highlights the success of our CSR efforts, affirming our commitment to making a meaningful impact on society.”



**Jigar Joshi**

*Manager — O&M*

“I am proud to be part of a company prioritising Corporate Social Responsibility. Engaging in projects such as Asha Education Centres, Skill Centres, installation of RO water plants, and construction of check dams has shown me the positive impact we make in the lives of the communities. Working at HFE is not merely a job for me but a commitment to create positive change. I believe that with simple initiatives, we are creating a better tomorrow.”

# SUCCESS STORIES



## Babulal Choudhary

A resident of Indrawal, Babulal owns 12 bighas of land. Before the construction of a check dam by Hero Future Energies, his annual income was limited to ₹ 70,000. Now, after the construction of a check dam, his income has doubled to ₹ 1,50,000 — a remarkable transformation.

The gross profit of ₹ 80,000 illustrates the substantial impact initiatives such as these have on the lives and livelihoods of individuals and communities by augmenting their farm incomes.



## Ratan Lal

A resident of Shergarh, Ratan Lal supports a family of four through his labour work. With 5 bighas of farmland, he used to rely solely on the rains for his crops. With a water check dam constructed by Hero Future Energies near his land, he can cultivate wheat, corn, onion and garlic crops all year round by utilising the dam water for irrigation.

He is happy and thankful to HFE and RKMF for this initiative.



## Hema

A resident of Bidwal in Dhar, Madhya Pradesh, Hema aspired to be a lawyer and make a positive impact on society despite coming from a humble background. She learned the fundamentals of computer skills at the Hero Future Energies Computer Centre, eventually securing a position as an assistant to a lawyer. Hema extends her heartfelt gratitude to HFE and RKMF for their invaluable support in enhancing her computer skills, which played a pivotal role in her successful employment journey. Her story exemplifies the power of determination and access to education in helping one achieving her dreams.




## Parmila


Parmila completed a six-month tailor training programme at RKMF Skill Centre in Sheo, Barmer, with the support of Hero Future Energies. She dedicated herself to mastering sewing and stitching. With her new skills, Parmila began working from home — even opening a shop and earning a steady income of ₹ 10,000 per month. She expresses her gratitude to RKMF for the life-changing opportunity. Her story highlights how determination and the opportunity to develop the right skills can change one's life.





For any queries, please reach out to:  
[archna.sumbly@herofutureenergies.com](mailto:archna.sumbly@herofutureenergies.com)

 [www.herofutureenergies.com](http://www.herofutureenergies.com)

 202, Okhla Industrial Estate Phase III,  
New Delhi - 110020